

质量放心 客户满意

QUALITY ASSURED, CUSTOMER SATISFACTION

www.hongyuanflange.com



浙江泓源法兰有限公司

ZHEJIANG HONGYUAN FLANGE CO., LTD.

地址：浙江省温州市龙湾滨海园区三路595号

电话：138 5889 8633 QQ:183222602

Add: No. 3456, Yongqiang Road, Yongxing Street, Longwan District, Wenzhou City, Zhejiang Province

Tel: 138 5889 8633 QQ: 183222602



企业网站
Corporate website



泓源法兰
HONGYUAN FLANGE



PROFESSIONAL
Manufacturer Of
Compression Flanges

卡压法兰专业制造商
十余年专业制造经验

www.hongyuanflange.com

COMPANY PROFILE

公司简介

浙江泓源法兰有限公司坐落于温州滨海工业园区，是一家不锈钢法兰专业制造商。企业拥有标准生产车间及高精度数控加工中心，高速钻床，大口径端面加工车床等设备及光谱仪，硬度测试仪等检测设备。并建有完善的质量保证体系与售后保障服务体系。给我们一个合作机会，还您一份满意！

企业主导法兰产品有：卡压法兰全系列、常规平焊法兰、对焊法兰、高压法兰、非标法兰、盲板、管板、橡胶接头法兰、大口径法兰及非标定制等。材质有：304、304L、321、316、316L、310S等多种材质。

企业以良好的信誉报答广大用户对我们的厚爱，秉承“一切为用户满意”的经营理念，将不断为广大用户提供更优质的产品和更完善的售后服务，为建立现代化企业努力奋斗。
泓源法兰竭诚欢迎新老顾客携手合作，共创辉煌！

卡压法兰专业制造商
通用不锈钢法兰制造商
非标/大口径法兰制造商
专业304/304L/321/316/316L/310S等多种材质法兰

Zhejiang Hongyuan Flange Co., Ltd. is located in Wenzhou Binhai Industrial Park. It is a stainless steel Professional manufacturer of steel flanges. The company has standard production workshops and high-precision CNC machining Center, high-speed drilling machine, large-diameter end face processing lathe and other equipment and spectrometer, hardness Testing equipment such as testers. And built a complete quality assurance system and after-sales guarantee service Service system. Give us a chance to cooperate and return your satisfaction!

The leading flange products of the enterprise include: a full range of compression flanges, conventional flat welding flanges, butt welding Flange, high pressure flange, non-standard flange, blind plate, tube sheet, rubber joint flange, large Caliber flange and non-standard customization, etc. Materials are: 304, 304L, 321, 316, 316L, 310S and other materials.

The company repays users' love for us with a good reputation, adhering to the principle of "all for "Customer satisfaction" business philosophy, will continue to provide users with better quality products And more perfect after-sales service, and strive to establish a modern enterprise. Hongyuan Flange wholeheartedly welcomes new and old customers to work together to create brilliant!



WENZHOU HONGYUAN FLANGE CO., LTD.



精良设备/强大实力

泓源对每个产品都进行严格的检测。检测员高度负责的用心溶于每一个部件中，加上最先进的检测设备和严格的科学化管理，是每一个生产的成品经得住顾客的精心挑选。泓源庄严承诺让每一个生产产品都达到出厂标准。这就是泓源产品得以畅销的秘诀所在。

Hongyuan conducts strict testing on each product. Inspectors' highly responsible care is dissolved in each component, coupled with the most advanced testing equipment and strict scientific management, each product produced can withstand the careful selection of customers. Hongyuan solemnly promises that every product produced will meet factory standards. This is the secret of the success of Hongyuan products.



我公司制定了一整套完整的质量控制体系，并配有非常严谨的科学管理制度，严格按照规程执行操作，产品结构合理、制造工艺精湛、产品质量可靠。

Our company has developed a complete set of quality control system, And is equipped with a very rigorous scientific management system, strictly according to Operate according to the regulations, the product structure is reasonable, the manufacturing process Exquisite craftsmanship and reliable product quality.

多重焊接处理 MULTIPLE WELDING PROCESS

泓源在产品焊接及后期处理都力求完美
Hongyuan strives for perfection in product welding and post-processing

多种连接方式 MULTIPLE CONNECTION METHODS

卡压焊接连接端可选配螺纹，弯头，三通等连接卡压管件，满足用户需求。
The compression welding connection end can be equipped with thread, elbow, tee and other connection compression pipe fittings to meet the needs of users.

多种制造标准 MULTIPLE MANUFACTURING STANDARDS

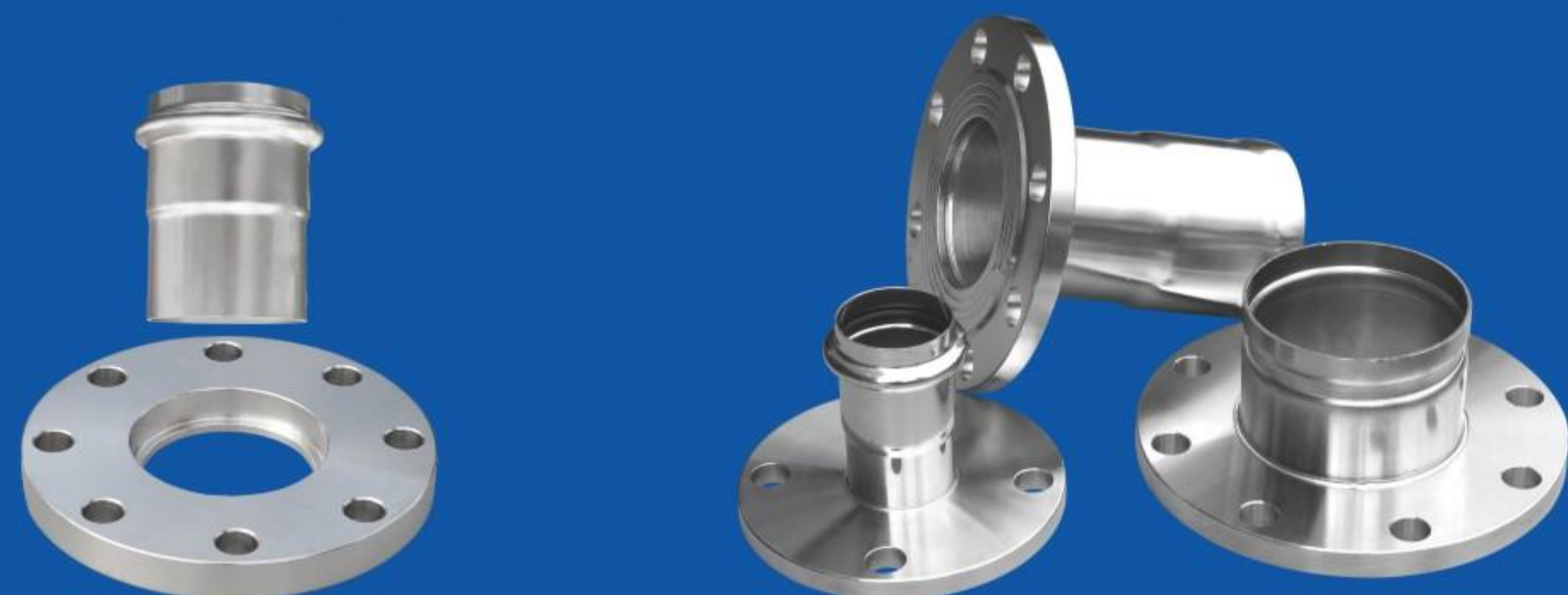
泓源在卡压法兰生产中为客户提供国标，美标，日标，德标，俄标等产品。
Hongyuan provides customers with GB, API, JIS, DIN, GOST And other products.

用料考究
Exquisite
Materials

工艺严谨
Rigorous
Craftsmanship

检验严格
Strict Inspection

服务周到
Good Service



卡压法兰

对焊法兰

非标法兰

管板

平焊法兰

高压法兰

盲板法兰

橡胶接头法兰

卡压法兰系列 ▼
Compression flange series



卡压法兰

对焊法兰

非标法兰

管 板

平焊法兰

高压法兰

盲板法兰

橡胶接头法兰

常规法兰系列 ▼
Conventional flange series



卡压法兰

对焊法兰

非标法兰

管 板

平焊法兰

高压法兰

盲板法兰

橡胶接头法兰

常规法兰系列 ▼
Conventional flange series



非标/大口径法兰系列 ▼
Non-standard/large diameter flange series

